



# Zebulon Middle School Orchestra

## 2016-2017 Course Syllabus

### 6<sup>th</sup> – 8<sup>th</sup> Grade Orchestra

#### Instructor Information

Name: Mrs. LaSaundra Booth

- BA Music: Instrumental Performance, Cello (North Carolina Central University, 2003)
- Masters in Music Education: String Pedagogy (UNC- Greensboro, 2009)
- Educational Specialist, Educational Leadership (Northcentral University, 2016)
- Doctorate in Educational Leadership (pending Nov. 2017)

Email: [lbooth@wcpss.net](mailto:lbooth@wcpss.net)

Phone: (919) 404-3630

Office Location: Room 625

Office Hours: by appointment only

Si necesita servicios de traducción gratuitos para comprender los procesos escolares, llame al (919) 852-3303

إذا كنت بحاجة إلى خدمات الترجمة المجانية للتعرف على سير العمليات بالمدرسة، اتصل بالرقم (919) 852-3303

Si vous avez besoin de services de traduction gratuits pour comprendre les procédures scolaires, appelez le (919) 852-3303

यदि आपको विद्यालय की प्रक्रियाओं को समझने के लिए निःशुल्क अनुवाद सेवाएं चाहिए, तो (919) 852-3303 पर कॉल करें

학교/교육 과정에 관한 무료 번역 서비스가 필요하시면 다음 번호로 연락하여 주십시오 (919)852-3303

Nếu quý vị cần sự thông dịch miễn phí để hiểu phương pháp trường học, xin vui lòng gọi số điện thoại, 919-852-3303

## Table of Contents

---

|  |        |
|--|--------|
| Course Descriptions.....                             | pg. 3  |
| Course Objectives & Activities.....                  | pg. 4  |
| Course Policies.....                                 | pg. 5  |
| Honor Code   |        |
| Grading Policy                                       |        |
| Weekly Practice Log Policy                           |        |
| Weekly Assessment Policy                             |        |
| Make-Up Work   |        |
| Tardy Policy   |        |
| Student Expectations                                 |        |
| Organizational Structure/ Classroom Hierarchy        |        |
| Student Leadership Positions & Responsibilities      |        |
| Course Requirements.....                             | pg. 9  |
| Supply List (method book, instrument, & accessories) |        |
| Concert Attire                                       |        |
| Concert/ Event Dates                                 |        |
| Additional Educational Opportunities.....            | pg. 10 |
| Spring Field Trip                                    |        |
| ZMS Orchestra Event Dates.....                       | pg. 11 |
| Important Forms.....                                 | pg. 12 |

## I. Course Descriptions

### ▪ 6<sup>th</sup> Grade Beginning Orchestra

6<sup>th</sup> Grade Beginning Orchestra is designed for students who have limited orchestral experience, or who are switching to a new primary string instrument (violin, viola, cello, or bass). Emphasis will be placed on correct posture, technique, following conductor cues, and tone development. Beginning Orchestra students will be required to create and maintain an online portfolio. Students will be required to demonstrate what they have learned by performing in one concert per semester. By the end of the course, Beginning Orchestra students must demonstrate mastery level learning of NC Essential Standards for 6<sup>th</sup> Grade. A copy of the NC Essential Standards for 6<sup>th</sup> Grade Music is located on pages 13–14 of the following link: <http://www.dpi.state.nc.us/docs/acre/standards/new-standards/arts/music/k-8.pdf> Orchestra is a year long elective. In order to demonstrate growth and mastery of concepts, students are encouraged to register for and participate in orchestra for both semesters.

### ▪ 7<sup>th</sup> Grade Continuing Orchestra

7<sup>th</sup> Grade Orchestra is a course tailored to assist students with at least one year of orchestra experience. Students will learn to apply new techniques to help improve tone production, instrumental technique, vibrato, following conductor cues, and dynamics. Continuing Orchestra students will be required to create and maintain an online portfolio. Students will be required to demonstrate what they have learned by performing in one concert per semester. By the end of the course, students must demonstrate mastery level learning of NC Essential Standards for 7<sup>th</sup> Grade. A copy of the NC Essential Standards for 7<sup>th</sup> Grade Music is located on pages 15 – 16 of the following link: <http://www.dpi.state.nc.us/docs/acre/standards/new-standards/arts/music/k-8.pdf> Orchestra is a year long elective. In order to demonstrate growth and mastery of concepts, students are encouraged to register for and participate in orchestra for both semesters.

### ▪ 8<sup>th</sup> Grade Advanced Orchestra

8<sup>th</sup> Grade Advanced Orchestra is a course designed for students that have demonstrated mastery at both the Beginning and Continuing levels. 8<sup>th</sup> Grade Orchestra students are leaders within the orchestra, are consistent with practicing their instruments, and demonstrate mastery level learning of the current repertoire. Advanced Orchestra students will be required to create and maintain an online portfolio, perform in all

orchestra concerts, rehearsals, and community performances. 8<sup>th</sup> grade orchestra students will be encouraged to audition for Honor’s All-State Orchestra, and will be encouraged to perform at least one solo or chamber ensemble selection on the Winter or Spring concerts. Additionally, Advanced Orchestra Students must demonstrate mastery level learning of all assigned scales, music theory elements, sight reading exercises, advanced solo and chamber music repertoire, as well as Grade 2-4 orchestral literature. Advanced Orchestra students are required to sign up for two consecutive semesters of the course, as it is a year long elective. By the end of the course, students must demonstrate mastery level learning of NC Essential Standards for 8<sup>th</sup> grade music. A copy of the NC Essential Standards for 8<sup>th</sup> Grade Music is located on pages 17 - 18 of the following link:

<http://www.dpi.state.nc.us/docs/acre/standards/new-standards/arts/music/k-8.pdf>

**II. Course Objectives & Activities**

▪ Course Objectives

The goals and objectives for this course are aligned with the Music Literacy, Music Response, and Contextual Relevancy of the NC Essential Standards for Beginning, Intermediate, Proficient, and Advanced High School Music. Students who successfully complete this course will be able to:

1. Apply and transfer concepts learned in orchestra to real world situations including, but not limited to creating event playlists, displaying performance etiquette, and creating websites to generate performance opportunities.
2. Develop an effective and systematic approach to practicing their instrument.
4. Perform from memory assigned 1-3 octave major and minor scales.
5. Compose and arrange at least one music composition for string instruments.
6. Perform music requiring the use of 1<sup>st</sup> through 5<sup>th</sup> positions.
8. Explain how concepts of music theory and history are contextually relevant to current events.
9. Evaluate performances of self, peers, and professional string musicians.
10. Create, prepare, and perform music in a formal setting for a live audience at least twice per year.

▪ Course Activities

It is important for you to know not only the types of activities that will occur this year, but how these activities align with the goals and objectives for the course as well as the district’s emphasis on the 4 C’s including collaboration, communication, creativity, and critical thinking. While more activities may be added based on the needs of students, a list of the core activities planned for the year is provided.

| <b>ZMS Orchestra Course Activities</b>  |  |
|---|--|
| <p><b><u>Communication</u></b></p> <ul style="list-style-type: none"> <li>▪ Daily rehearsals (ML, MR, CR,)</li> <li>▪ Following Conductor Cues/ gestures (ML)</li> <li>▪ Data from Assessments (ML, MR,CR)</li> </ul> | <p><b><u>Creativity</u></b></p> <ul style="list-style-type: none"> <li>▪ Compositions (ML)</li> <li>▪ Arrangements (ML)</li> <li>▪ Web Portfolio (CR)</li> </ul> |

|  |   |
|--|---|
| <ul style="list-style-type: none"> <li>▪ Publicity &amp; Event Marketing (CR)</li> <li>▪ Performances (ML, MR, CR)</li> </ul>  | <ul style="list-style-type: none"> <li>▪ I-PAD Group Movie Project (CR, ML, MR)</li> <li>▪ Program Music (MR, CR)</li> </ul>  |
| <p><b><u>Collaboration</u></b></p> <ul style="list-style-type: none"> <li>▪ Instrumental Sectionals (ML, MR)</li> <li>▪ Concerts, Recitals (ML, CR)</li> <li>▪ Multicultural Group Powerpoint &amp; Presentation (CR)</li> <li>▪ Analysis of current repertoire (MR)</li> <li>▪ I-PAD Group Movie Project (CR, ML, MR)</li> <li>▪ Fundraising Events (as approved by principal)</li> </ul> | <p><b><u>Critical Thinking (Music</u></b></p> <ul style="list-style-type: none"> <li>▪ Performance Evaluation (ML)</li> <li>▪ Jury Critiques (MR)</li> <li>▪ Interpretation of musical phrases and dynamic changes (ML)</li> <li>▪ Sight Reading (ML)</li> <li>▪ Synthesis of music theory fundamentals (ML)</li> </ul> |

NC Essential Standards for 6<sup>th</sup>-8<sup>th</sup> Grade Music Abbreviations.

ML = Music Literacy, MR = Musical Response, and CR = Contextual Relevancy

**III. Course Policies**

▪ Honor Code

The students of Zebulon Middle School are committed to being honest and responsible in the completion of academic materials and interactions with the school administration and community. Cheating, stealing, plagiarism (passing off another's work, words, or ideas as one's own), and lying (including willful distortion or misrepresentation) are considered violations of the Honor Code. Through a joint fulfillment of this code, students and faculty will achieve their fullest potential in academic excellence and character. Any student who violates the honor code will receive consequences per Wake County Board Policy –Parent/Student Handbook (pg.10).

▪ Grading Policy

Study in the arts includes the development of technical skill, exploration of creativity, appreciation for the aesthetic experience, and demonstration of appropriate artistic work habits. To ensure consistent, appropriate, comprehensive, and reasonable reflection of student achievement in the arts, grading practices will incorporate the following components:

| Grading Category   | Grade Percentage |
|--|------------------|
| <p><b>Large Projects, Concerts, Tests, Weekly Rehearsal Technique</b><br/>i-movie project, e-portfolio, playing &amp; written tests, concerts, performances, active participation during daily &amp; weekly classroom activities</p> | 40%              |
| <p><b>Small Projects, Quizzes, Skills Assessments</b><br/>Quizzes, compositions, sectionals, weekly practice logs</p>  | 30%              |

|   |   |     |
|---|---|-----|
| <b>Classwork Assignments</b>                                  | - | 20% |
| Reflections, essays, self-evaluations, pre & post assessments |   |     |
| <b>Homework</b>   | - | 10% |
| Return classroom forms & signed progress reports by due date  |   |     |

- Weekly Practice Log

Practice is essential and mandatory for each student. Students are required to **practice at least 2 hours or more** a week. In order to make practice more effective, students must complete an online practice journal and submit the form online by 11 p.m. Sunday night. An electronic copy of the practice journal is available on the orchestra website: [www.zmsorchestra.weebly.com](http://www.zmsorchestra.weebly.com) Practice journals help students break content into smaller chunks, which makes practice more effective and musicianship increase. Individual growth is expected to occur each week. Students who fail to show weekly progress may not receive practice credit for the week unless the student's parent(s) can provide documentation of the practice time.

- Weekly Assessment Policy

Assessments are used to communicate student achievement and identify areas for improvement to students, parents, and teachers. Assessments may occur in the form of a quiz, test, observation, practice log summary, evaluation, or musical jury (playing test with student feedback during the class period). Students will receive at least one assessment per week.

- Make Up Work Policy

All assignments must be turned in on time. It is the student's responsibility to complete all assignments when they are due. If a student is absent, it is HIS/HER responsibility to make up the assignments and/or test within the time allotted by Wake County Public School System. Any unexcused absence from a mandatory performance event such as a concert, recital, audition, or graduation performance cannot be made up, and a grade of zero will be given. No extra credit work is given or accepted in this course.

- Tardy Policy

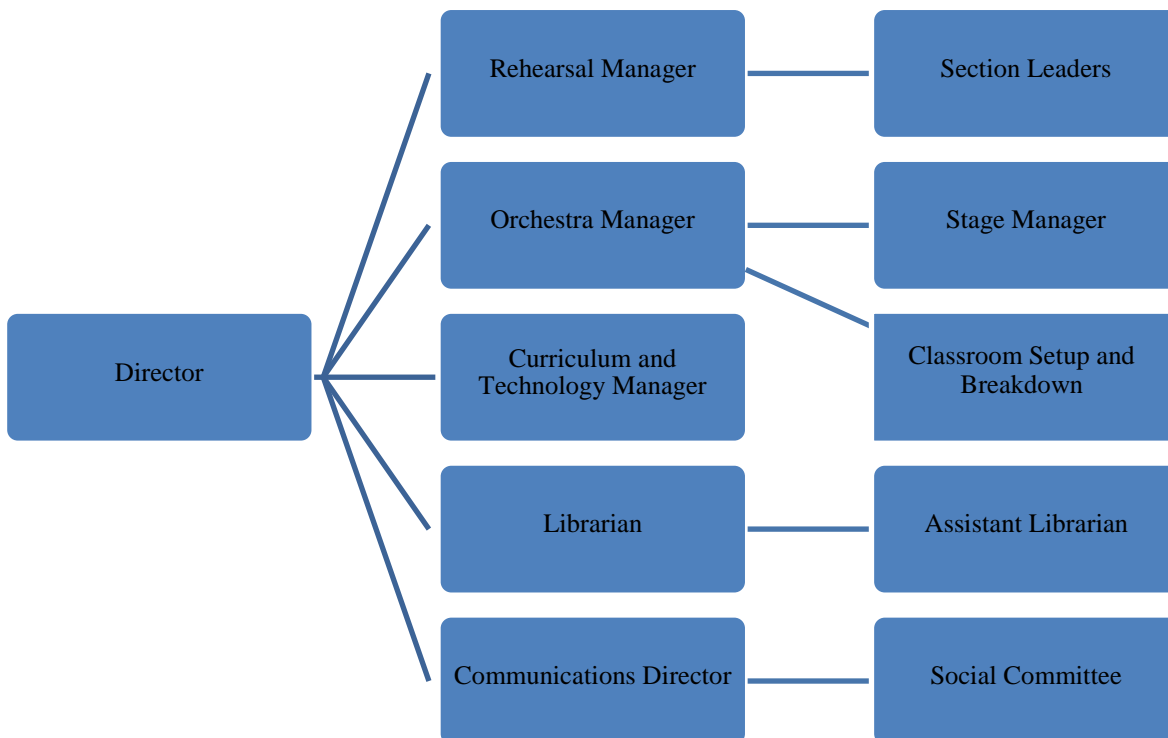
- a. Students are expected to be in their seats with their instruments, assigned music folder, and pencil when the tardy bell has sounded. Attendance is taken immediately following the tardy bell. Any student who is late to class must have the appropriate ZMS Hall Pass from the office or a teacher. Without the appropriate documentation, the tardy will be recorded in NC Ed Cloud as an unexcused tardy.
- b. Parents will be notified after a child has accumulated two unexcused tardies within a quarter. Lunch

detention will be assigned on the third tardy per the ZMS handbook. Any additional consequences will be given according to the ZMS handbook.

▪ Student Expectations & Responsibilities

1. Arrive to class on time with your instrument, music, and pencil each day.
2. Maintain a high level of expectations for yourself and the course.
3. Respect your classmates, teacher, our rehearsal space, and yourself.
4. Actively participate in rehearsals, sectionals, and group projects.
5. Turn in assignments on time.
5. Adhere to ZMS classroom policies and procedures at all times.
6. No eating, drinking, or using electronic devices without the permission by the director.
7. Master and be ready to play any selections from the current repertoire list.
8. Practice at least 2 hours per week and submit weekly practice logs online by the due date.
9. Keep left hand nails trimmed.
10. Adhere to any additional requirements for your specific course level.

▪ Organizational Structure/ Classroom Hierarchy



▪ Leadership Positions and Responsibilities

-A detailed list for leadership policies and procedures are located on the website.

**Key:**

- C = appointed cabinet
- A = through application
- \*\* position requires enrollment in both semesters of orchestra

| Position  | Responsibilities  | Expectations  |
|---|---|---|
| Orchestra Manager (c)<br>**   | <ul style="list-style-type: none"> <li>- takes attendance</li> <li>- keeps track of dates</li> <li>- creates seating charts for class and concerts</li> <li>- assists in making programs, playlists and class agenda</li> <li>- schedules rehearsals</li> <li>- appoints and directs Stage Managers and ushers for class setup and concert staging</li> <li>- has performance checklist 3 weeks prior to performance</li> </ul> | <p>All leaders are expected to:</p> <ul style="list-style-type: none"> <li>- have a positive attitude</li> <li>- maintain a high standard of behavior and conduct</li> <li>- practice consistently</li> <li>- excel in all assignments</li> <li>- cooperate with others</li> <li>- communicate often</li> <li>- audition for All-State</li> <li>- keep a leadership notebook for in-coming leaders</li> </ul> <p>In situations where no application-based positions are filled, cabinet leaders are to assume those responsibilities.</p> <p>When absences cannot be avoided, leaders are to inform another member of the cabinet of their plan(s) for rehearsal at least 24 hours prior to rehearsal time.</p> |
| Communications Manager (c) **   | <ul style="list-style-type: none"> <li>- records information from the conductor during class</li> <li>- communicates announcements and reminders (email, r101) to members</li> <li>- communicates with the booster club</li> <li>- manages and publishes given information onto the orchestra website</li> <li>- documents pictures of the orchestra</li> </ul>   |   |
| Librarian (c) **<br><br>Assistant Librarian (a)<br><i>[cannot assume responsibilities without the main librarian]</i> | <ul style="list-style-type: none"> <li>- oversees music library</li> <li>- does inventory (on spreadsheet)</li> <li>- makes copies of music</li> <li>- organizes and distributes music</li> <li>- updates orchestra notebook with new repertoire</li> <li>- only person other than the director and the assistant librarian(s) who can handle sheet music</li> </ul>  |   |
| Rehearsal Manager (c)<br>**   | <ul style="list-style-type: none"> <li>- runs warm-ups</li> <li>- runs rehearsal as stand-in for conductor</li> <li>- studies music scores</li> <li>- positively communicates with the orchestra and keeps everyone engaged</li> </ul>  |   |
| Social Committee (a)  | <ul style="list-style-type: none"> <li>- organizes social events for members (ex. picnics)</li> <li>- makes cards for members (ex. get-well cards)</li> <li>- Oversees vision board</li> <li>- Oversees publicity for the orchestra (Facebook, Twitter, etc.)</li> <li>- posts events (ex. birthdays or Tri-M announcements)</li> </ul>   |   |
| Stage Manager (a)   | <ul style="list-style-type: none"> <li>- sets up during class</li> <li>- sets up stands and chairs for soloists</li> </ul>  |   |



|                        |  |  |
|------------------------|--|--|
|                        | - manage needed equipment (piano, drums etc.)  |  |
| Section Leaders (a) ** | <ul style="list-style-type: none"> <li>- must have the desire to lead</li> <li>- are able to be a role model in morality and preparation (attendance, having music, positive attitude)</li> <li>- must communicate with and engage section members during sectionals (ex. identify what the section is and is NOT doing, give the bowings, give appropriate fingerings for music passages, etc.)</li> <li>- must have good command of repertoire in order to teach and lead sectionals</li> <li>- make sure members clean up after class (ex. sheet music, chairs, stands, etc.)</li> <li>- communicate with music librarians</li> <li>- make sure section has music before rehearsals and performances</li> </ul> |  |

### IV. Course Requirements

- Concert Attire:

All orchestra students are required to wear concert attire to each performance, or they will not be allowed to perform.

**Young Ladies.** All black ankle-length dress, or black ankle-length skirt with black blouse. All dresses and skirts for ladies must come well past the knee when sitting. Please wear black stockings and black dress shoes.



*Information regarding purchasing a dress or tuxedo is located on the orchestra website: [www.zmsorchestra.weebly.com](http://www.zmsorchestra.weebly.com)*

**Young Men.** White dress shirt with collar, black dress pants, belt, and black tie. Please wear black socks and black dress shoes. NO JEANS are allowed for concerts.



Concert Jewelry:

**Young Ladies.** Diamond studs or pearl earrings only. *No bracelets.*

**Young Men.** *No Earrings.* (All earrings must be taken out while performing.)

- Supply List:

**ALL STUDENTS WILL NEED A PENCIL, 3-RING BINDER, AND SHEET PROTECTORS FOR MUSIC**

**I. Required Materials for 6th Grade Beginning Orchestra**

Violins: Essential Elements 2000 (Violin Book I), Rosin, Shoulder Rest,  
 Violas: Essential Elements 2000 (Viola Book I), Rosin, Shoulder Rest,  
 Cellos: Essential Elements 2000 (Cello Book I), dark Rosin, endpin belt,  
 Basses: Essential Elements 2000 (Bass Book I), dark Rosin, endpin rockstop,  
 All Students: Orchestra T-shirt (approximately \$15)

**II. Required Materials for 7<sup>th</sup> & 8<sup>th</sup> Grade Orchestra**

Violins: Essential Elements 2000 (Violin Book I and II), Rosin, Shoulder Rest,  
 Violas: Essential Elements 2000 (Viola Book I and II), Rosin, Shoulder Rest,  
 Cellos: Essential Elements 2000 (Cello Book I and II), dark Rosin, endpin belt,  
 Basses: Essential Elements 2000 (Bass Book I and II), dark Rosin, rock stop  
 All Students: Orchestra T-shirt (approximately \$15)

**V. Additional Educational Opportunities**

- Spring Field Trip

The ZMS Orchestra plans to travel to Kings Dominion, Virginia in Spring 2017. This trip is for educational purposes and will not impact a student's grade if they choose not to participate in this activity. Estimated travel costs range from \$150.00 to \$175.00 per student, depending on the number of students participating. The price will decrease if we have 30 or more students and chaperones to participate in this trip.

1. This cost includes festival or clinic costs, admission ticket(s), lunch, and bus transportation.
2. Payments may be made via a payment –plan schedule, or families can choose to pay the full amount. Information regarding a payment plan will be sent once the trip is approved.

- Orchestra Event Dates

The following is the list of dress rehearsals, performances and other events planned so far for this year. Please copy the dates into your calendar. In the near future, there may be other events added to the calendar. However, notification will be given in advance.

| Month          | Day | Time         | Event Description   |
|----------------|-----|--------------|---|
| September 2016 | 2   | Class Period | Orchestra Forms Due                                       |
| October 2016   | 10  | 10a.m.       | Sphinx Chamber Concert<br>Ligon Middle School             |
| October 2016   | 7   | All day      | Online Payment #1 for<br>Spring Trip \$30 (no<br>refunds) |

|               |     |         |  |
|---------------|-----|---------|--|
| November 2016 | 4   | All day | Online Payment #2 for Spring Trip is due \$30 (no refunds) |
| December 2016 | 2   | All day | Online Payment #3 for Spring Trip \$30 (no refunds)        |
| December 2016 | 15  | 6p.m.   | ZMS Orchestra Concert                                      |
| December 2016 | 20  | TBA     | Fine Arts Winter Showcase                                  |
| January 2017  | 13  | All day | Online Payment #4 for Spring Trip \$30 (no refunds)        |
| Feb 2017      | 10  | TBA     | Final Online Payment #5 for Spring Trip \$30 (no refunds)  |
| March 2017    | 7-9 | All Day | MPA  |
| May 2017      | 5   | All Day | Spring Trip Kings Dominion                                 |
| May 2017      | 11  | 6p.m.   | ZMS Orchestra Concert                                      |
| June 2017     | 7   | TBA     | Fine Arts Talent Showcase                                  |

# Orchestra Student Contract 2016–2017

Please sign and return this page to Mrs. Booth by September 2, 2016.

## Student Commitment

1. I have read through the orchestra handbook with my parents and understand the grading and attendance policy.
2. I understand that I must comply with all classroom rules, procedures, routines, and expectations.
3. I understand that I am required to practice my instrument at least 2 hours or more each week.
4. I understand that I am required to attend the Winter Concert, Spring Concert, and all other performances that are listed in this handbook.
5. I understand all of the course requirements, and understand that failure to fulfill these requirements may affect my grade.
6. I understand that my cooperation, practice, and participation in orchestra are extremely important to the success of the group and will be a significant part of my grade.
7. I understand that orchestra is a scheduled class for the entire school year and that a high standard of excellence will be demanded from me at all times.
8. I am prepared to make a commitment to orchestra for the 2016–2017 school year.

Student Name (printed) \_\_\_\_\_ Student Signature \_\_\_\_\_

Orchestra Class \_\_\_\_\_ Date \_\_\_\_\_

## Parent Commitment

Parents: Orchestra is a commitment for the entire school year. I want to work closely with you to make sure that your child reaches his/her full potential. This year I am focusing on providing multiple ways to keep lines of communication open. Please include your email address and phone number so that I have multiple ways to communicate with you throughout the school year. I will also need volunteers to help with the different activities that we have planned this year. All parents must sign up in the main office in order to get level 4 clearance to chaperone field trips or help with school events.

Parent Name: \_\_\_\_\_

Phone Number ( ) \_\_\_\_\_

Email Address \_\_\_\_\_